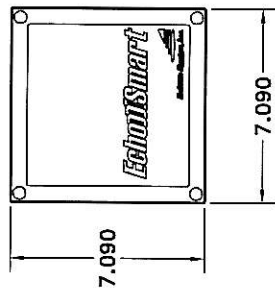
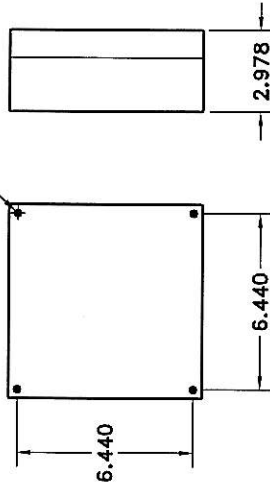


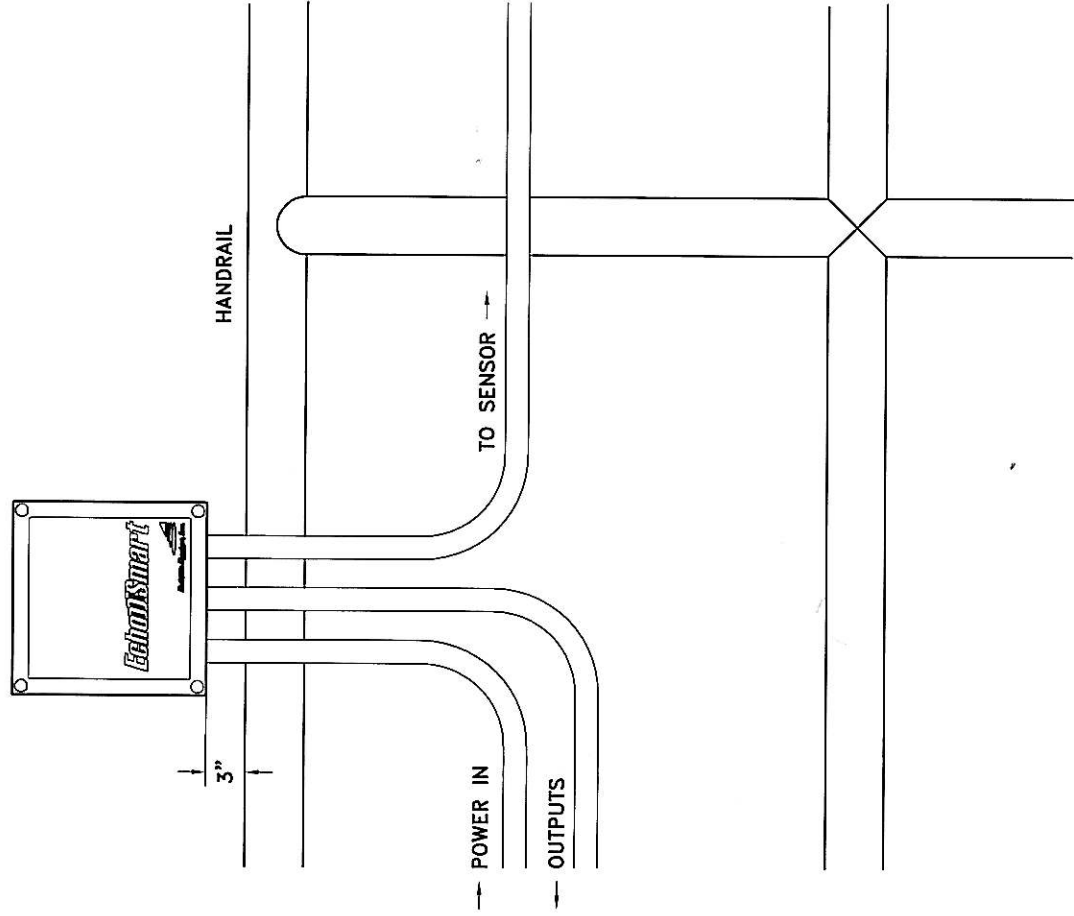
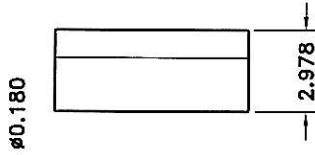
FRONT VIEW



BACK VIEW



SIDE VIEW



CONTROLLER INSTALLATION NOTES:

1. LOCATE ECHO SMART POWER SUPPLY APPROXIMATELY 3" ABOVE TOP HANDRAIL AS SHOWN. ANCHOR 1/2" METAL CONDUIT TO HANDRAIL BY STANDARD CONSTRUCTION METHODS (UNISTRUT, CLAMPS, ETC.) TO SECURE ENCLOSURE.
2. APPROXIMATE CONTROLLER WEIGHT: 2.0 LBS.
3. ENCLOSURE MATERIAL OF CONSTRUCTION: ABS/PC

THIS DRAWING IS THE PROPERTY OF
ENTECH DESIGN, Inc.
 AND IS LOANED UPON CONDITION THAT IT IS NOT TO BE
 REPRODUCED OR TRANSMITTED IN ANY FORM OR BY ANY
 OTHER MEANS, WITHOUT PERMISSION TO WRITE OR FOR ANY
 AND WILL BE RETURNED UPON REQUEST.

Entech Design, Inc.
 382 S. LEXINGTON AVENUE, 17 FLOOR

SCALE: N/A DRAWN BY: TODD McLENDON
 DATE: 11-14-08

ECHO SMART POWER SUPPLY
 GENERAL ARRANGEMENT DRAWING

ECHO SMART DRAWING NO. 2107-52

REVISIONS