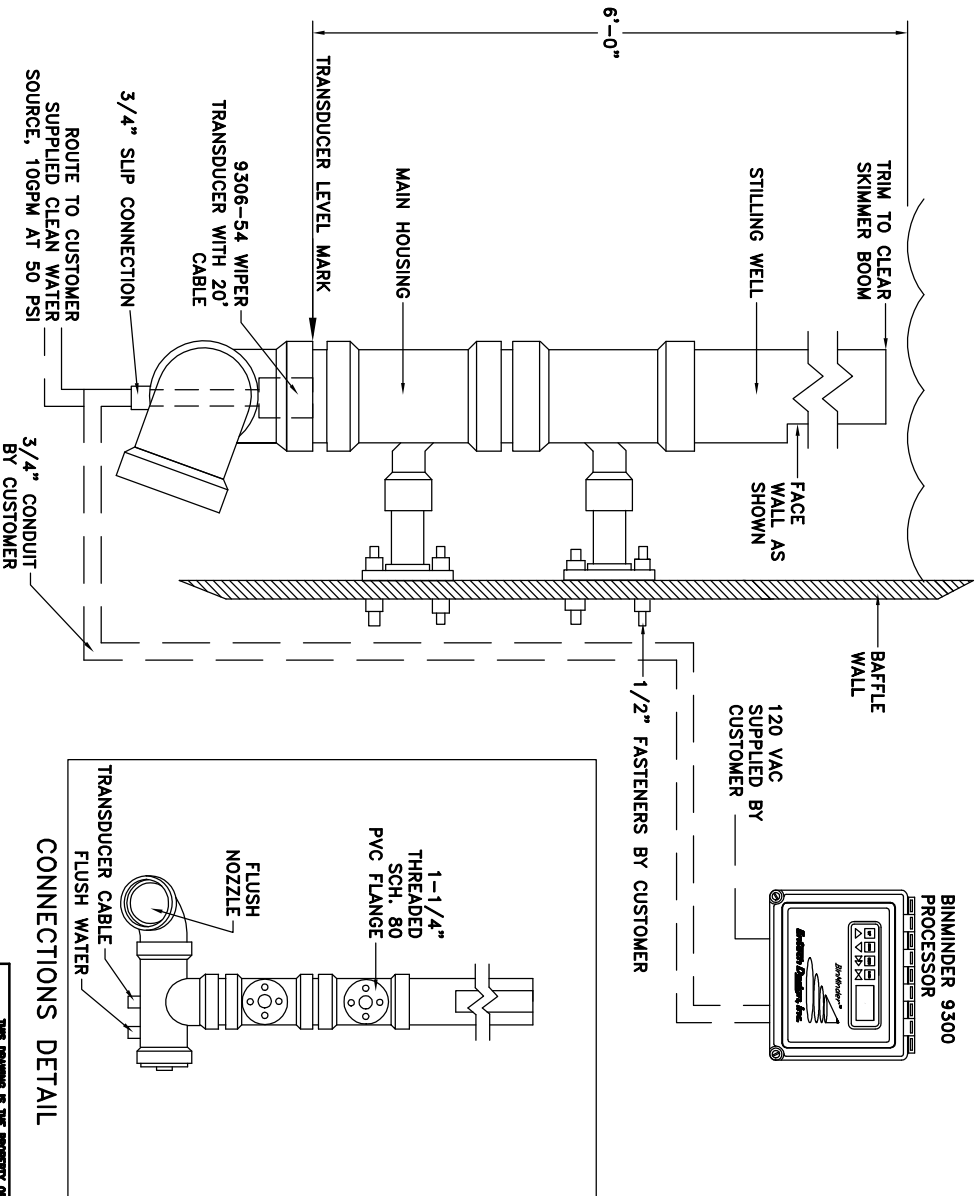


INSTALLATION NOTES:

1. The transducer housing assembly is shipped in three parts: the Main Housing (lower unit with transducer installed), the Stilling-well (slotted pipe), and the housing Flush-nozzle. **IMPORTANT:** Do not glue the stilling well pipe and flush-nozzle in place until the main housing has been attached to the curtain baffle wall.
 2. Mount the main housing such that the distance from the Transducer Level Mark (top of the transducer) to the surface of the water is 6'-0" as shown. Fasten using customer supplied 1/2" stainless steel fasteners appropriate to the requirements of the baffle wall design.
 3. Glue the Stilling-well pipe in place with the cut-away slot facing the curtain baffle wall. **IMPORTANT:** Trim the top of the pipe, as required, to prevent contact with the surface skimming equipment. The pipe will not extend fully to the surface of the water.
 4. Glue the Flush-nozzle in place with the opening directed downward and approximately 30° off horizontal. When properly installed, the nozzle will open to the side in a slightly downward direction, facing the baffle wall.
- CONSTRUCTION MATERIALS:**
The transducer housing is constructed of Schedule 80 PVC pipe and fittings.
- FLUSH WATER SUPPLY:**
This water source is provided for periodic flushing in the case that sediment collects in the transducer lower-housing unit. It is recommended that the housing be flushed for 3-5 minutes once monthly as a precaution. Continuous or unnecessarily frequent flushing may disturb the process and cause unreliable measurements.



		DATE: 5-1-03 SCALE: N/A DRAWN BY: TODD McCLENDON
		DAF THICKENER MOUNTING ARRANGEMENT
REVISIONS	BINMINDER 9300	DRAWING NO. 9300-116

THIS DRAWING IS THE PROPERTY OF ENTech DESIGN, INC. TO BE REPRODUCED OR TRANSMITTED IN ANY FORM OR BY ANY MEANS, WITHOUT PERMISSION IN WRITING FROM ENTech DESIGN, INC. WILL BE PENALIZED UPON REQUEST.